

For Sale

Former Bank Branch

2,440 SF | \$600,000



Former Bank Branch

2006 Patriot Way
Independence, Kentucky 41051

Property Highlights

- +/-2,440 SF freestanding one-story, brick former bank branch on +/-1.15 acres for sale
- Frontage of +/-155 feet on Madison Pike and +/-228 feet on Patriot Way
- Located on the northeast signalized corner of Patriot Way and Madison Pike just north of downtown Independence
- Sale Price: \$600,000
- Additional former bank branches available for sale by same owner - contact Broker for details

OFFERING SUMMARY

Sale Price	\$600,000
Lot Size	1.15 Acres
Building Size	2,440 SF

DEMOGRAPHICS

Stats	Population	Avg. HH Income
3 Miles	36,204	\$88,568
5 Miles	81,893	\$85,997
10 Miles	333,412	\$80,447

For more information

Al Isaac, President

O: 859 422 4400
alisaac@naiisaac.com

Jamie Adams, CCIM, Vice President

O: 859 422 4413
jadams@naiisaac.com

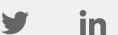
J.L. Cannady, CCIM, Vice President

O: 859 422 4410
jlcannady@naiisaac.com



Commercial Real Estate Services, Worldwide.

771 Corporate Drive, Suite 500
Lexington, KY 40503
859 224 2000 tel
naiisaac.com



Additional Photos



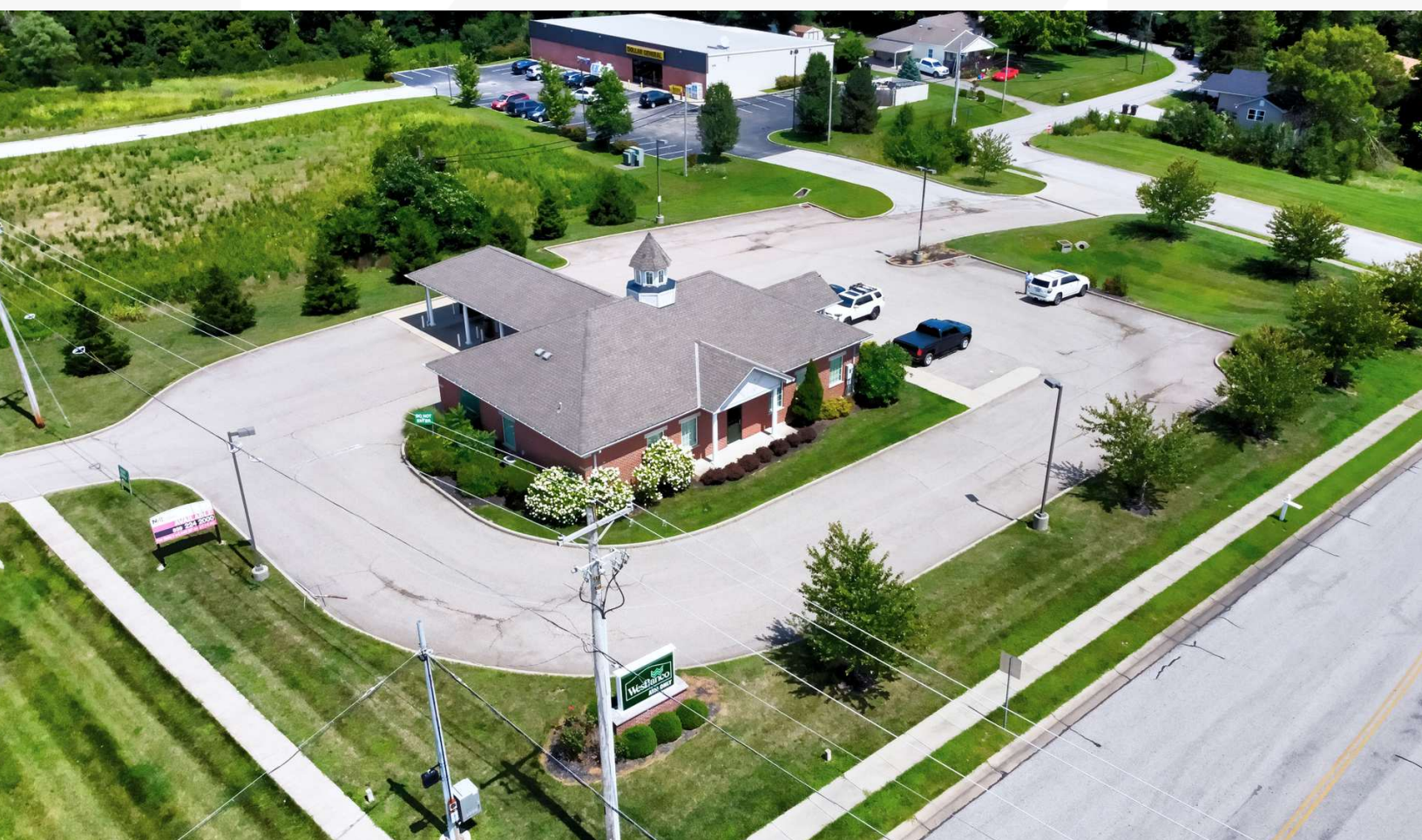
NAIisaac

Commercial Real Estate Services, Worldwide.

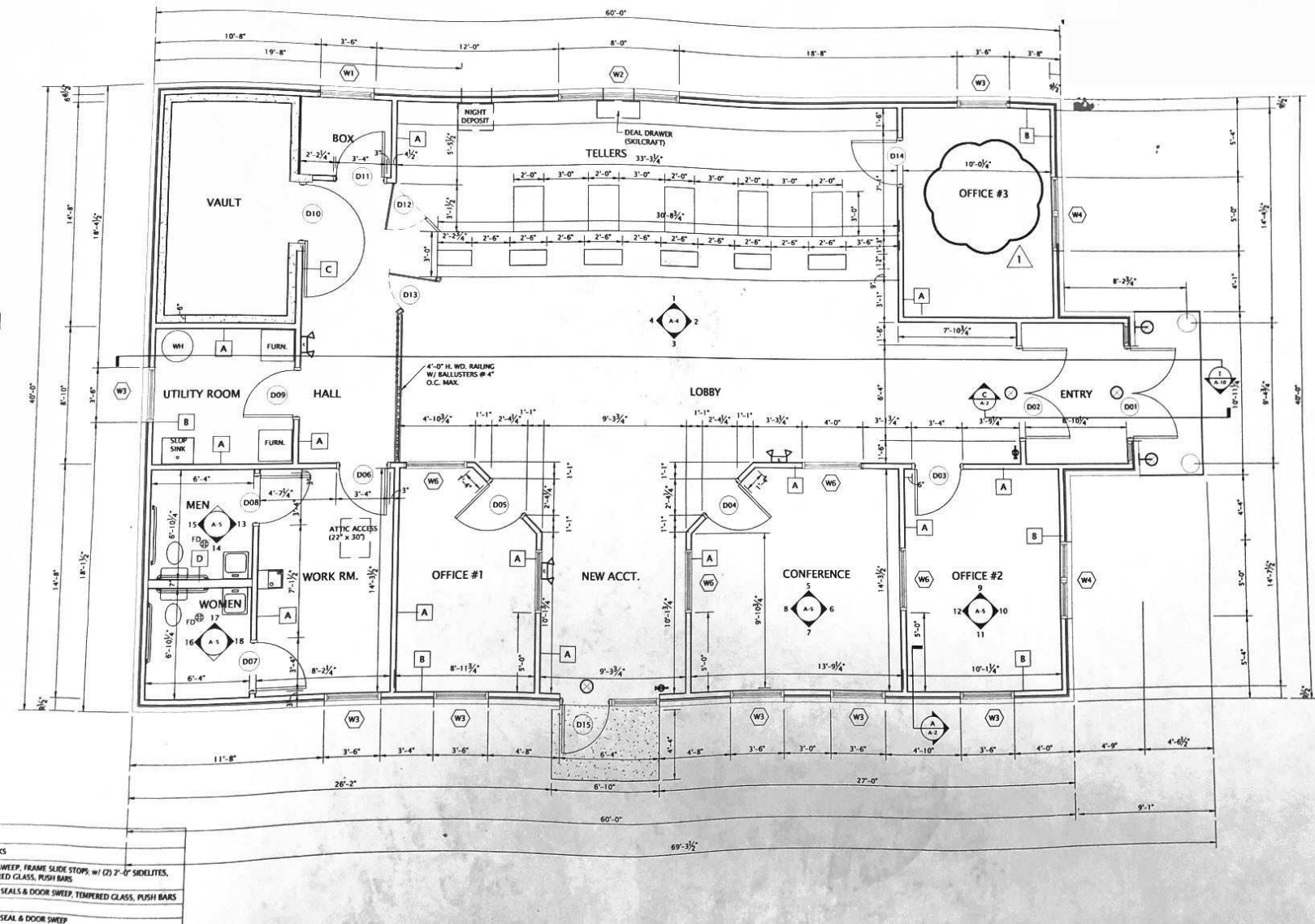
771 Corporate Drive, Suite 500
Lexington, KY 40503
859 224 2000 tel
naiisaac.com



Additional Photos



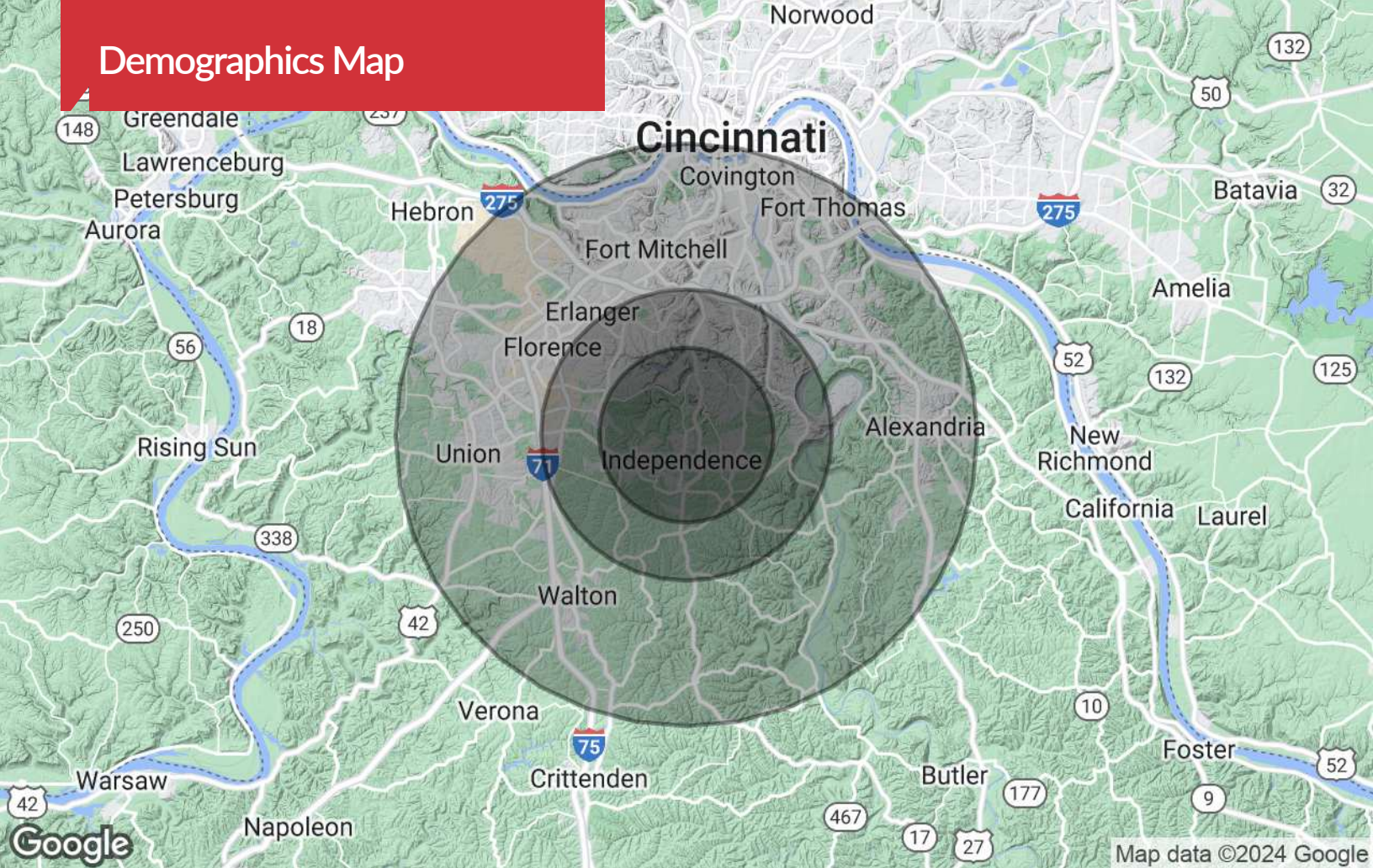
Floor Plan



+8



Demographics Map



Population

	3 Miles	5 Miles	10 Miles
TOTAL POPULATION	36,204	81,893	333,412
MEDIAN AGE	32.2	34.6	36.2
MEDIAN AGE (MALE)	31.4	33.7	34.9
MEDIAN AGE (FEMALE)	33.1	35.4	37.5

Households & Income

	3 Miles	5 Miles	10 Miles
TOTAL HOUSEHOLDS	11,980	28,575	128,825
# OF PERSONS PER HH	3.0	2.9	2.6
AVERAGE HH INCOME	\$88,568	\$85,997	\$80,447
AVERAGE HOUSE VALUE	\$168,070	\$177,718	\$171,461

* Demographic data derived from 2020 ACS - US Census