

For Sale

Office Building

7,200 SF | \$670,000



529 Westport Road

Elizabethtown, Kentucky 42701

Property Highlights

- +/-7,200 SF single-story modern, all brick office building
- Features include 13 private offices, large office/open room, breakroom and restrooms
- Located on Westport Road, adjacent to the Highway 31W Bypass in Elizabethtown in a quickly growing area with newer doctor and dentist offices, and government offices
- Elizabethtown is the county seat of Hardin County and is located at the intersection of three major highways: I-65, Bluegrass Parkway and the Western KY Parkway
- Sale Price: \$720,000 REDUCED TO \$670,000

OFFERING SUMMARY

| | |
|---------------|------------|
| Sale Price | \$670,000 |
| Lot Size | 1.36 Acres |
| Building Size | 7,200 SF |

DEMOGRAPHICS

| Stats | Population | Avg. HH Income |
|----------|------------|----------------|
| 3 Miles | 28,545 | \$68,030 |
| 5 Miles | 43,343 | \$73,003 |
| 10 Miles | 80,466 | \$72,321 |

For more information

J.L. Cannady, CCIM, Vice President

C: 270 945 2029

jlcannady@naiisaac.com

Jamie Adams, CCIM, Vice President

C: 859 396 5468

jadams@naiisaac.com



Commercial Real Estate Services, Worldwide.

771 Corporate Drive, Suite 500

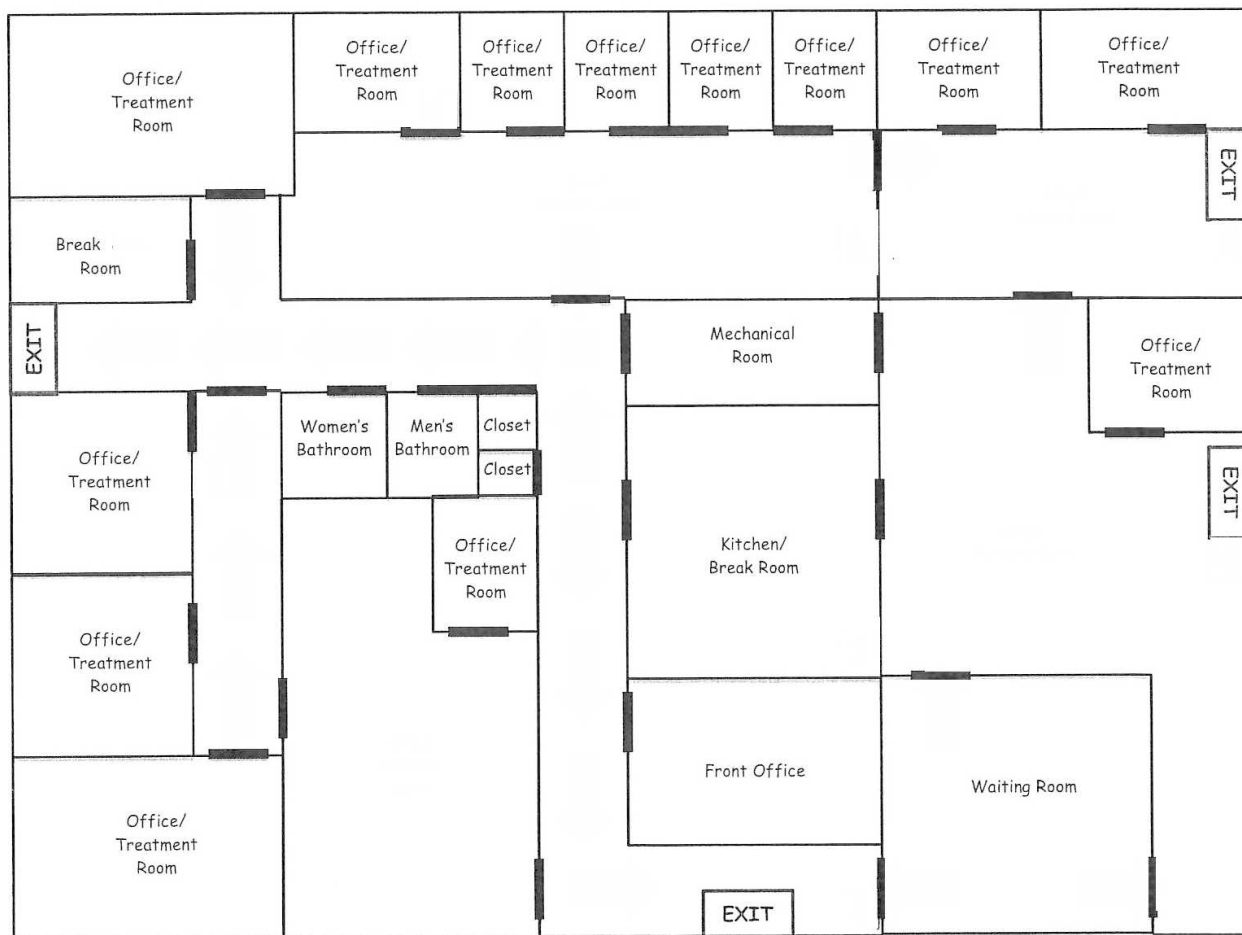
Lexington, KY 40503

859 224 2000 tel

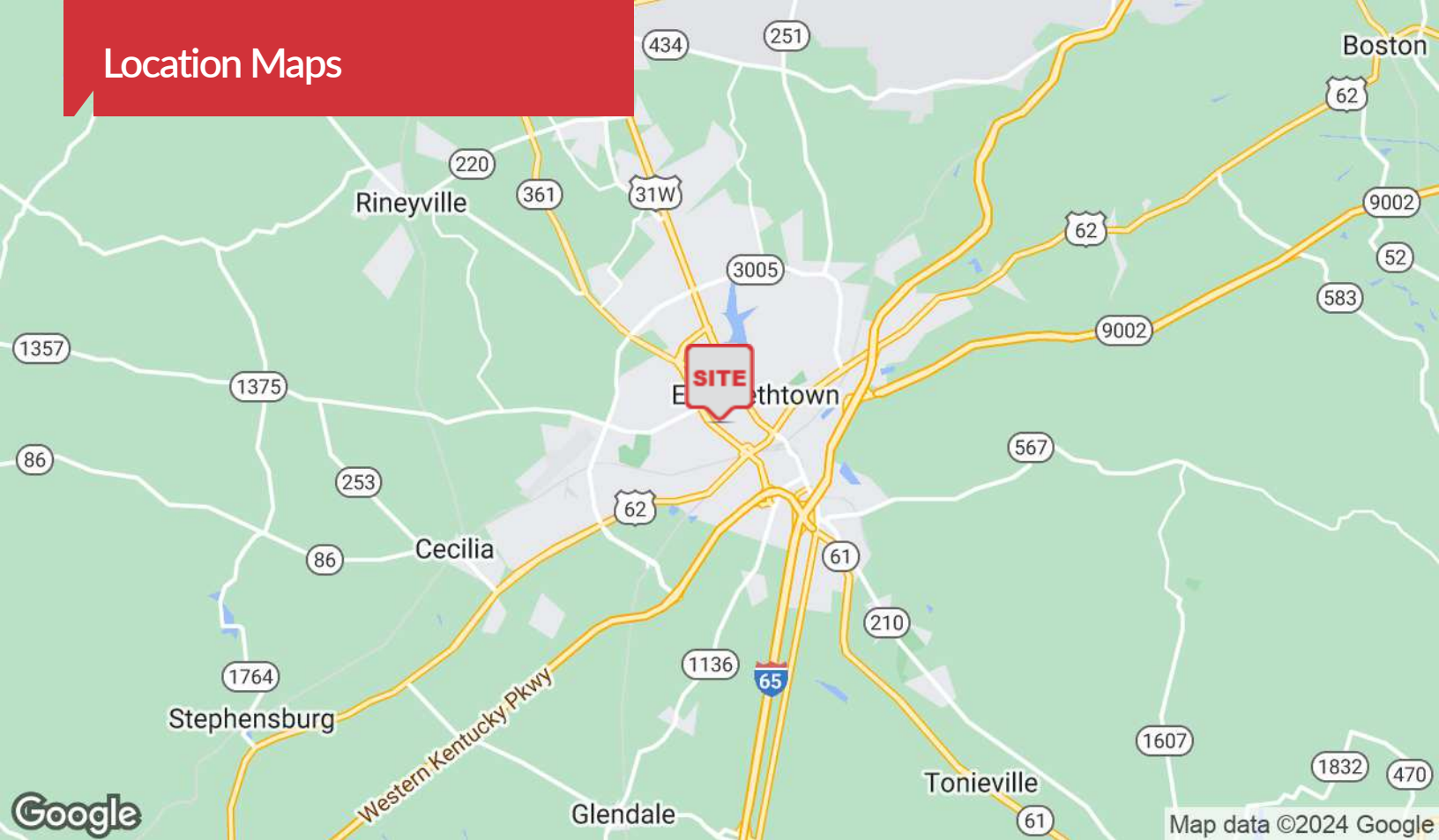
naiisaac.com



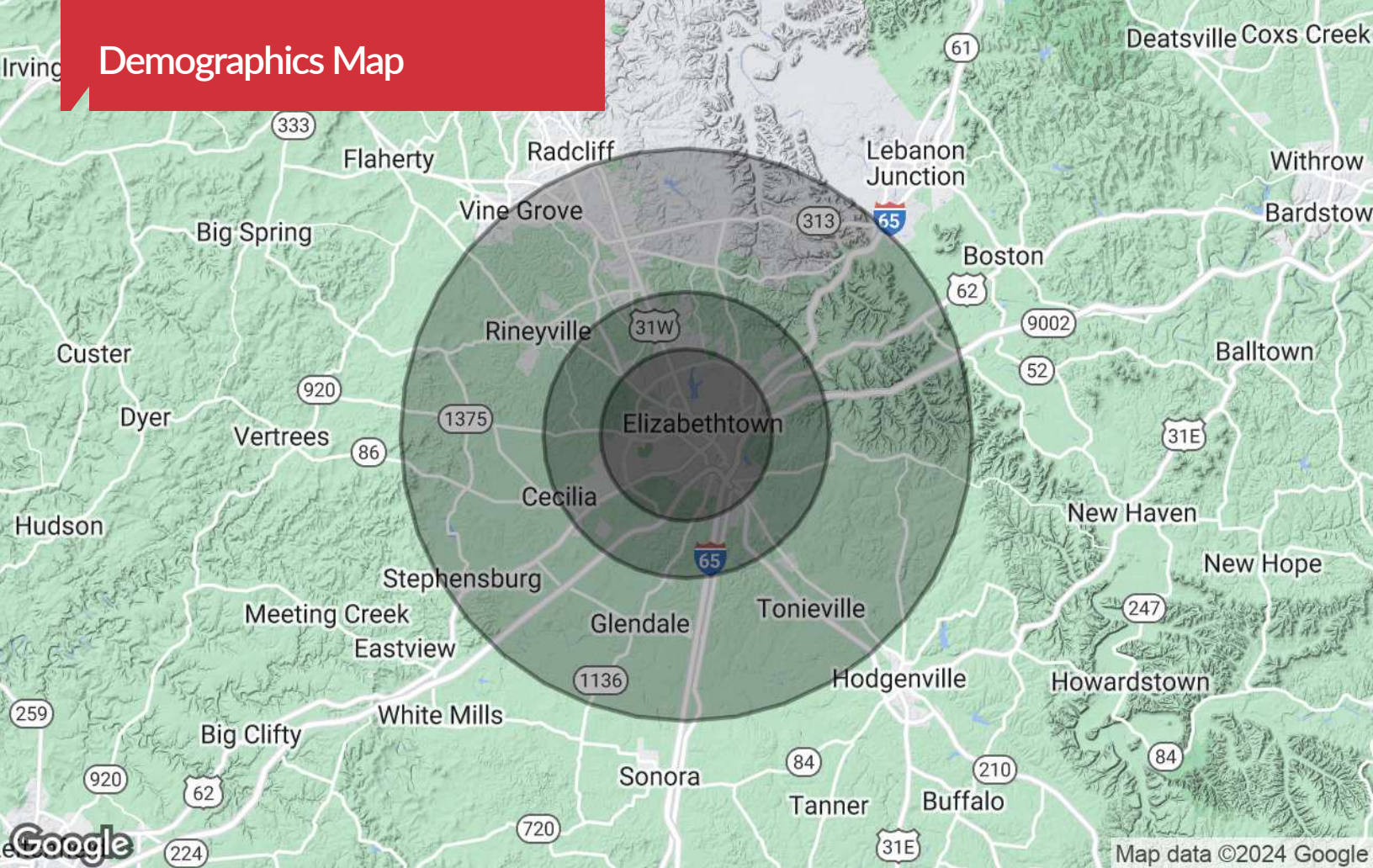
Floor Plan & Photos



Location Maps



Demographics Map



Population

| | 3 Miles | 5 Miles | 10 Miles |
|---------------------|---------|---------|----------|
| TOTAL POPULATION | 28,545 | 43,343 | 80,466 |
| MEDIAN AGE | 38.5 | 38.3 | 37.3 |
| MEDIAN AGE (MALE) | 36.0 | 36.3 | 35.9 |
| MEDIAN AGE (FEMALE) | 39.2 | 38.8 | 38.1 |

Households & Income

| | 3 Miles | 5 Miles | 10 Miles |
|---------------------|-----------|-----------|-----------|
| TOTAL HOUSEHOLDS | 11,716 | 17,379 | 31,344 |
| # OF PERSONS PER HH | 2.4 | 2.5 | 2.6 |
| AVERAGE HH INCOME | \$68,030 | \$73,003 | \$72,321 |
| AVERAGE HOUSE VALUE | \$176,347 | \$172,779 | \$165,528 |

* Demographic data derived from 2020 ACS - US Census