



## Interstate Commercial Land

112 & 118 Melcon Lane  
London, Kentucky 40741

### Offering Summary

Sale Price:	\$305,000 / acre
Lot Size:	1.12 - 2.31 Acres

### Property Highlights

- +/-1.12 - 2.31 AC development land
- Zoned C-2, General Business District (click <https://bit.ly/C-2zoning>)
- Adjacent to Red Roof Inn with excellent interstate visibility
- Located on Melcon Lane just off I-75 and Hal Rogers Parkway at Exit 41
- Area restaurants include Wendy's, White Castle, Arby's and KFC
- Sale Price: \$305,000 per acre

### For More Information

#### Paul Ray Smith, Jr

Executive Vice President

O: 859 422 4401

[prsmith@naiisaac.com](mailto:prsmith@naiisaac.com) | KY #183529

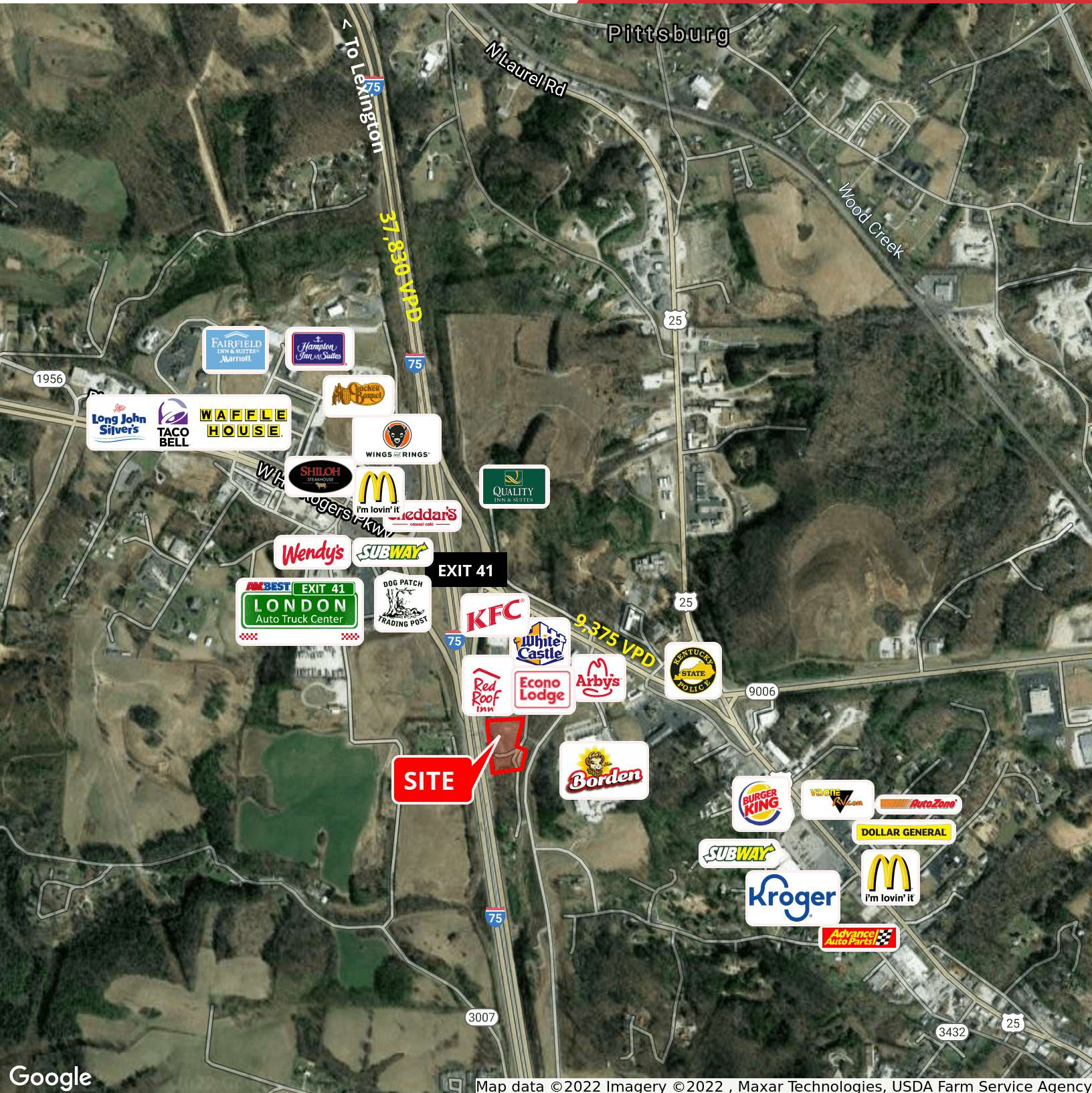
#### Jim Kemper

Vice President

O: 859 422 4407

[jimkemper@naiisaac.com](mailto:jimkemper@naiisaac.com) | KY #189559



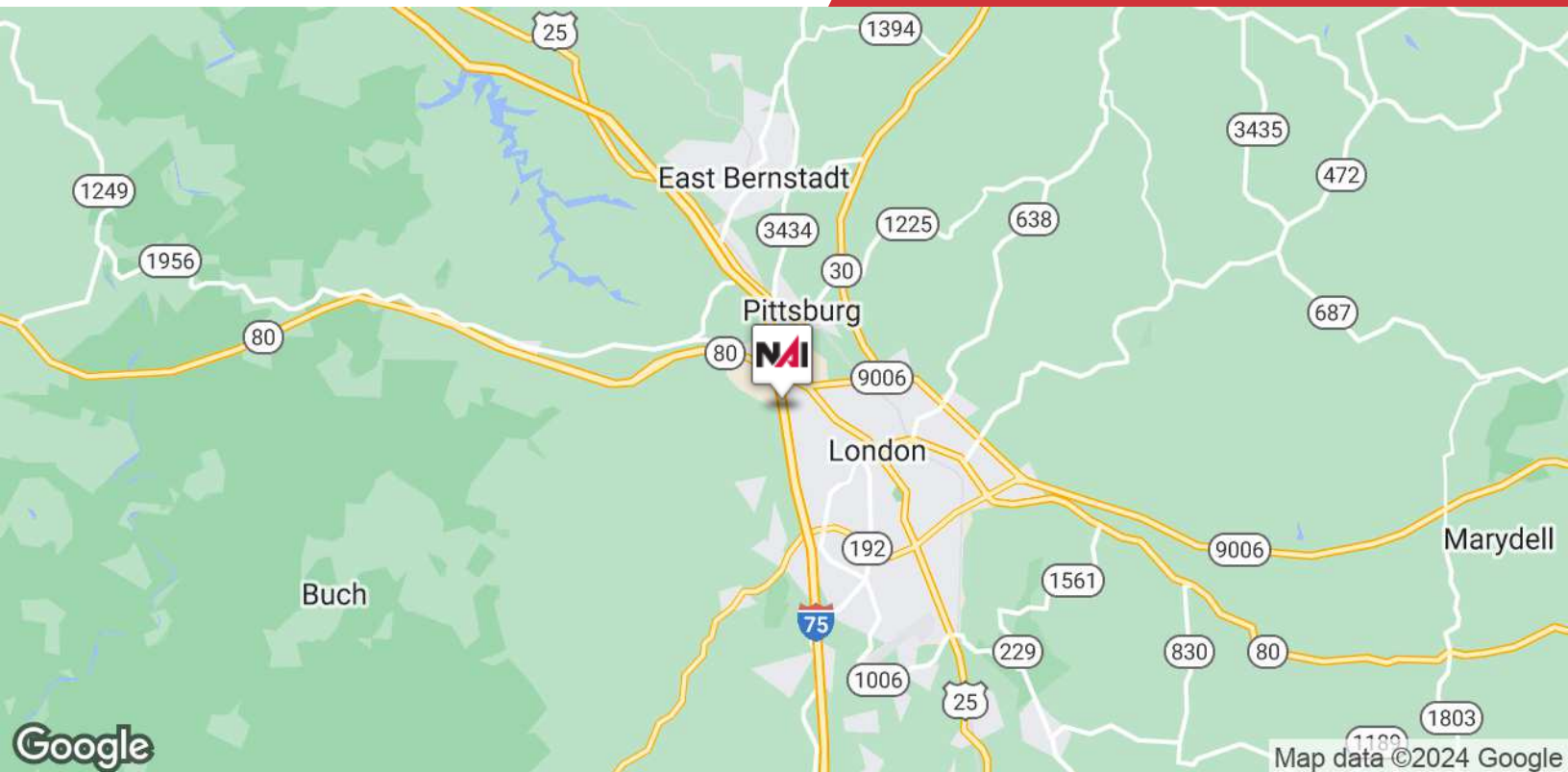




## For Sale

2.31 Acres | \$305,000 / AC

Commercial Land



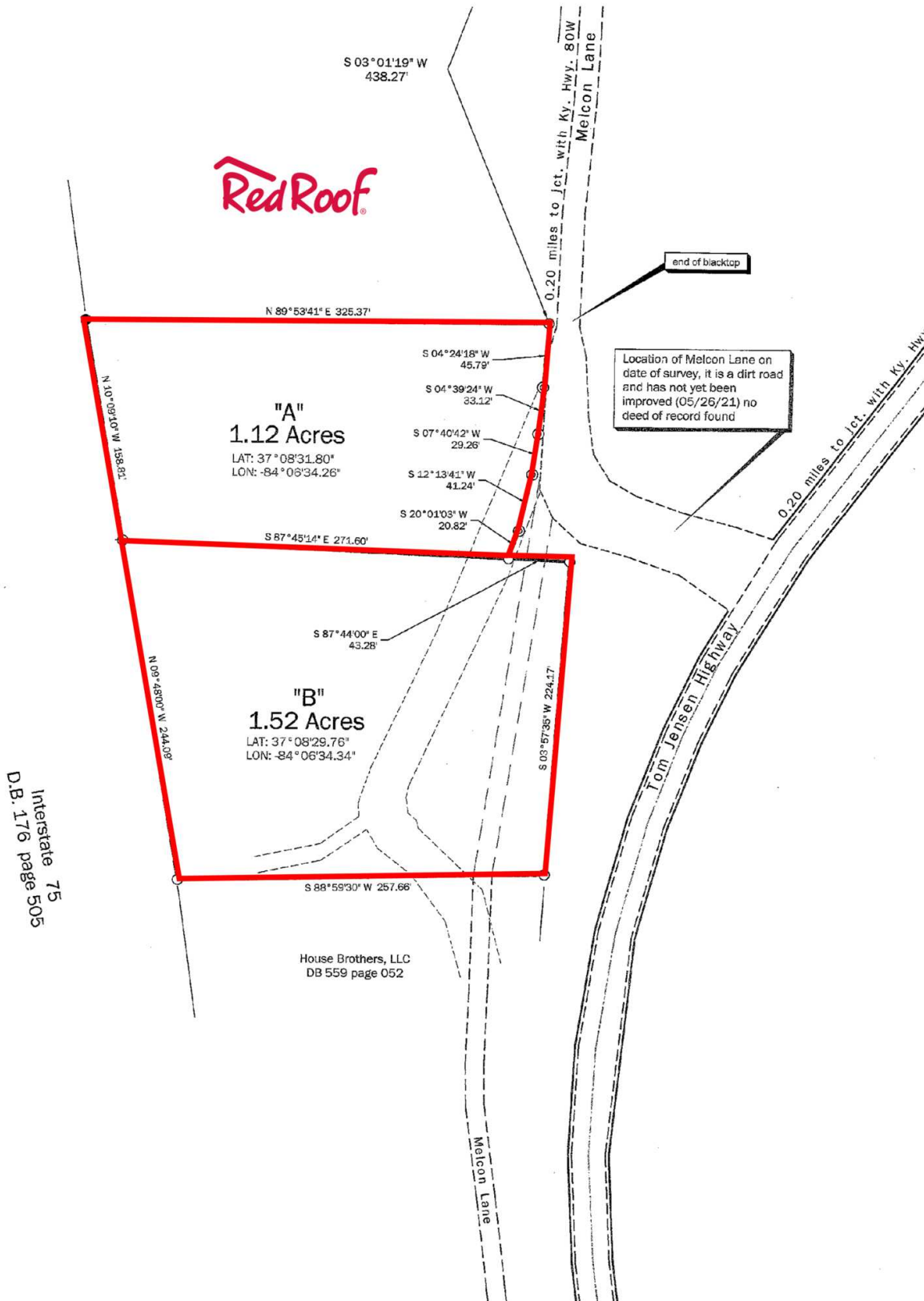
NO WARRANTY OR REPRESENTATION, EXPRESS OR IMPLIED, IS MADE AS TO THE ACCURACY OF THE INFORMATION CONTAINED HEREIN, AND THE SAME IS SUBMITTED SUBJECT TO ERRORS, OMISSIONS, CHANGE OF PRICE, RENTAL OR OTHER CONDITIONS, PRIOR SALE, LEASE OR FINANCING, OR WITHDRAWAL WITHOUT NOTICE, AND OF ANY SPECIAL LISTING CONDITIONS IMPOSED BY OUR PRINCIPALS NO WARRANTIES OR REPRESENTATIONS ARE MADE AS TO THE CONDITION OF THE PROPERTY OR ANY HAZARDS CONTAINED THEREIN ARE ANY TO BE IMPLIED.

771 Corporate Drive, Suite 500  
Lexington, KY 40503  
859 224 2000 tel  
[naiisaac.com](http://naiisaac.com)

## For Sale

2.31 Acres | \$305,000 / AC

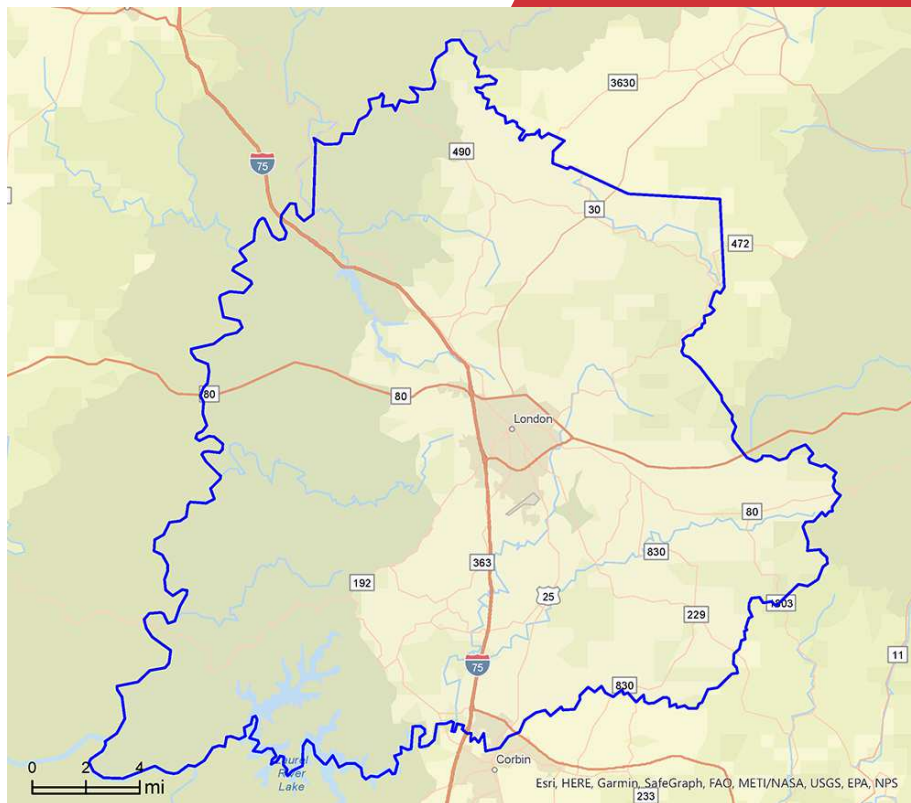
Commercial Land



# For Sale

2.31 Acres | \$305,000 / AC

Commercial Land

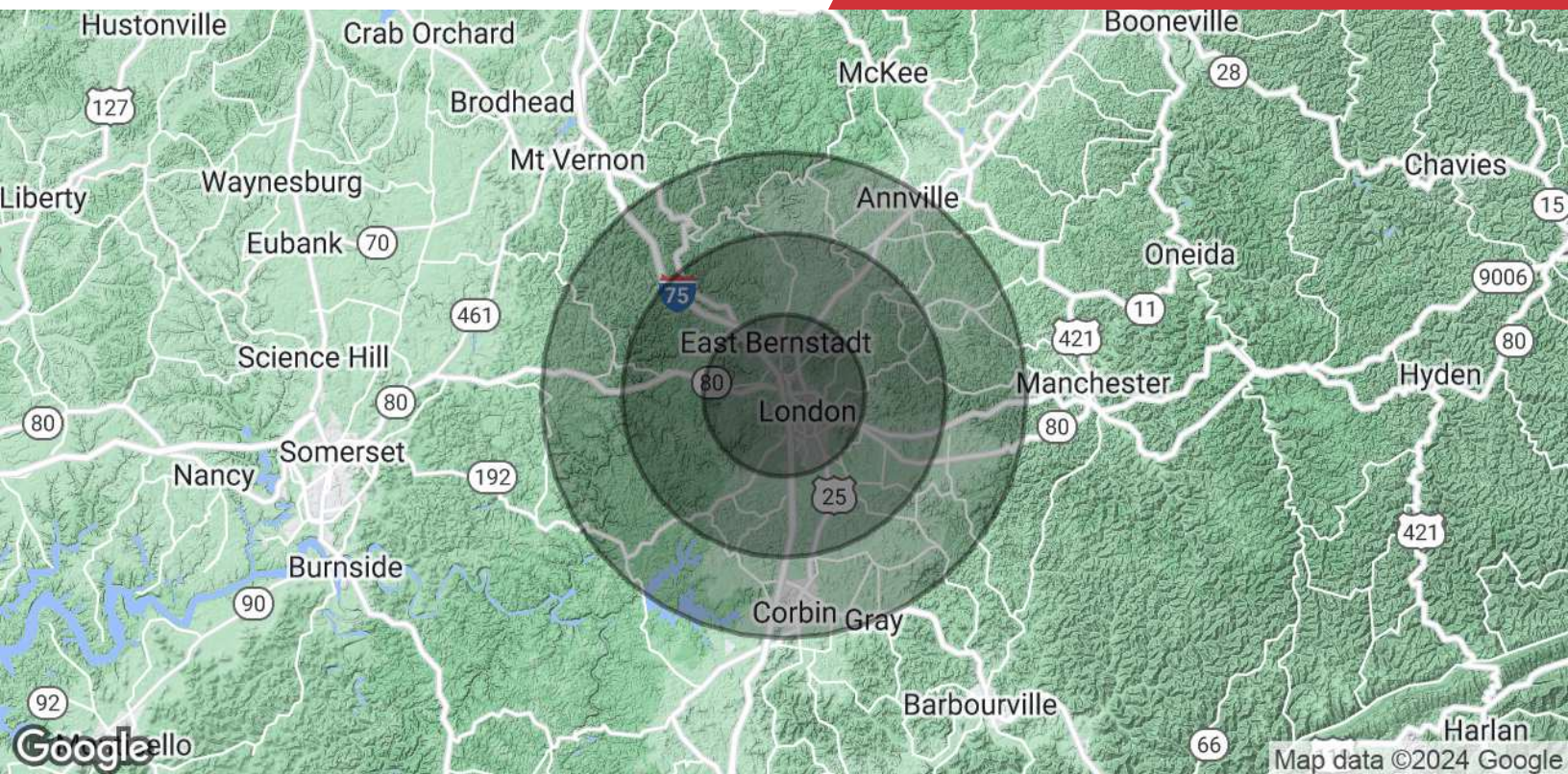


## Demographic Report 2021

## Laurel County

Population	61,819
Households	24,390
Average Household Income	\$59,439





### Population

	5 Miles	10 Miles	15 Miles
<b>Total Population</b>	25,395	49,292	83,573
<b>Average Age</b>	39.3	38.4	38.2
<b>Average Age (Male)</b>	37.3	37.0	36.9
<b>Average Age (Female)</b>	42.0	39.7	39.4

### Households & Income

	5 Miles	10 Miles	15 Miles
<b>Total Households</b>	10,296	19,376	33,220
<b># of Persons per HH</b>	2.5	2.7	2.6
<b>Average HH Income</b>	\$61,336	\$61,381	\$59,401
<b>Average House Value</b>	\$132,999	\$135,536	\$122,800

\* Demographic data derived from STDB 2021