



Former Bank Branch

2715 W Parrish Avenue
Owensboro, Kentucky 42301

Property Highlights

- 3,120 SF former bank building on 1.64 AC
- High profile location on W Parrish Avenue and Carter Road
- Located at a signalized intersection with three access points
- 33 parking spaces
- Nearby retailers include Ollie's, Kroger, Advance Auto Parts, McDonald's, Taco Bell and Burger King
- Great location for retail or service users needing a high visibility site
- Zoned B-4, General Business Zone
- Call for pricing

Offering Summary

Sale Price:	Call for pricing
Building Size:	3,120 SF
Lot Size:	1.64 Acres

For More Information

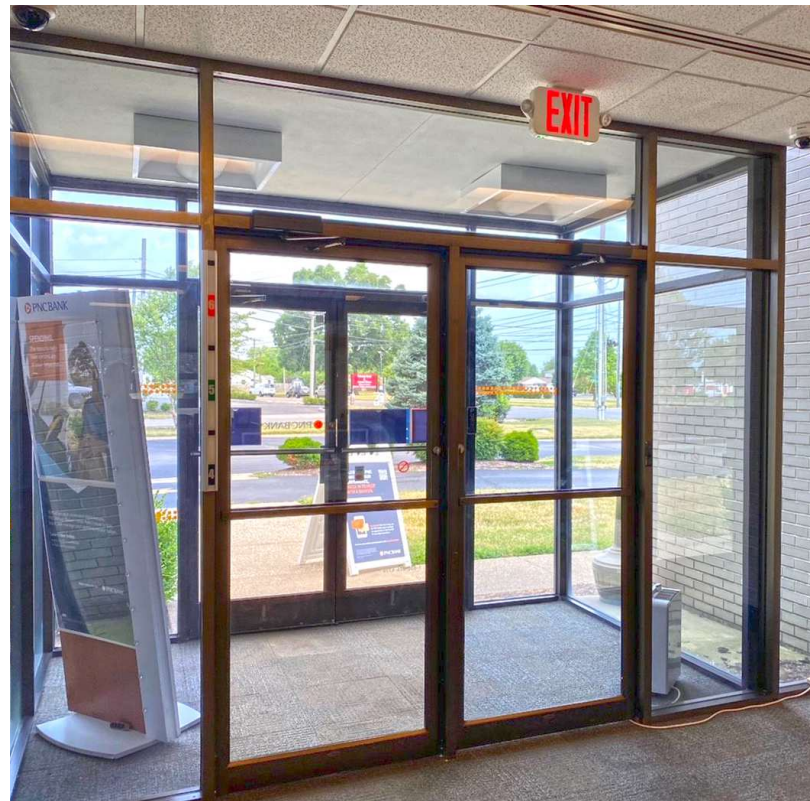
Jim Kemper

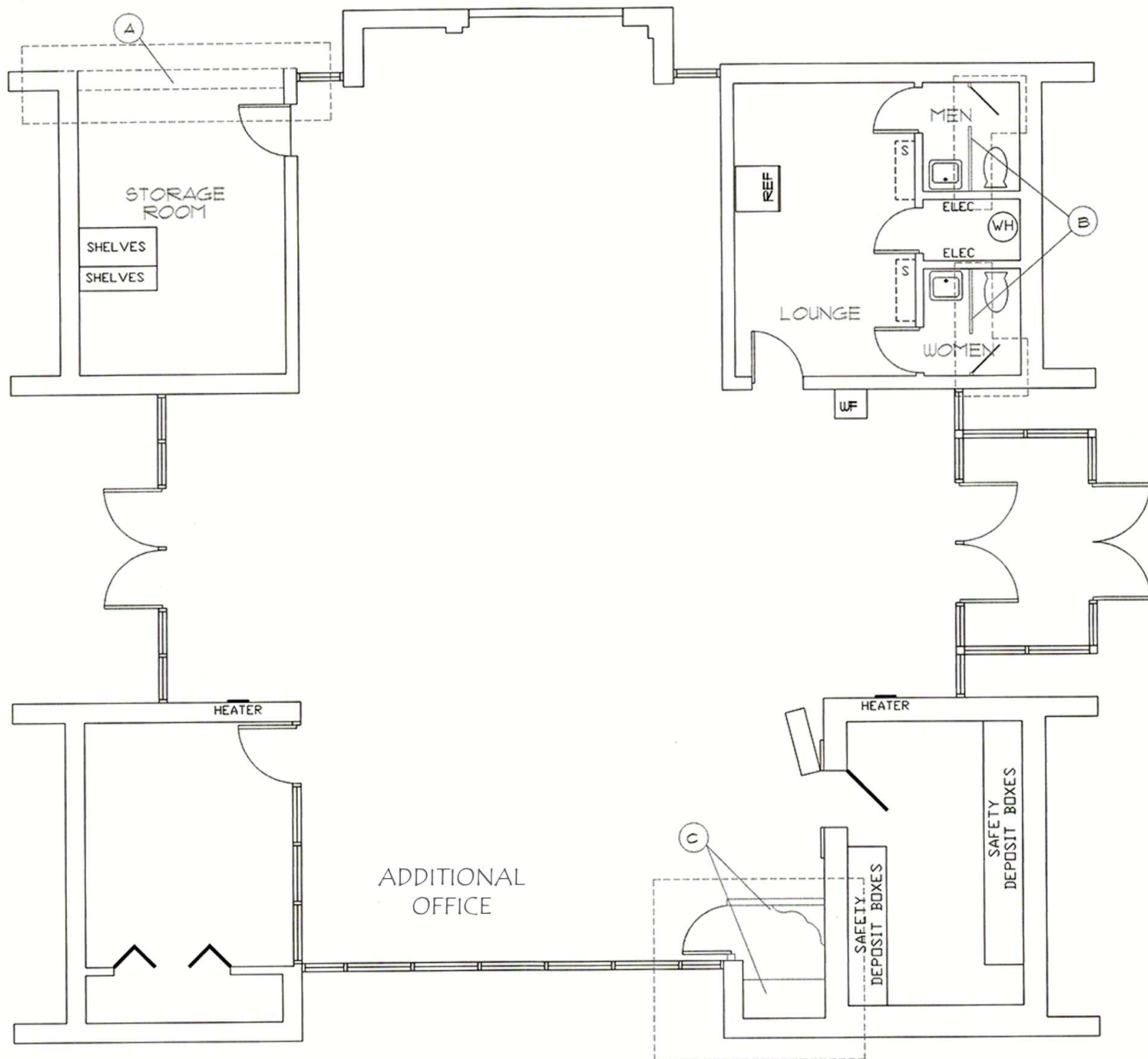
Vice President

O: 859 422 4407

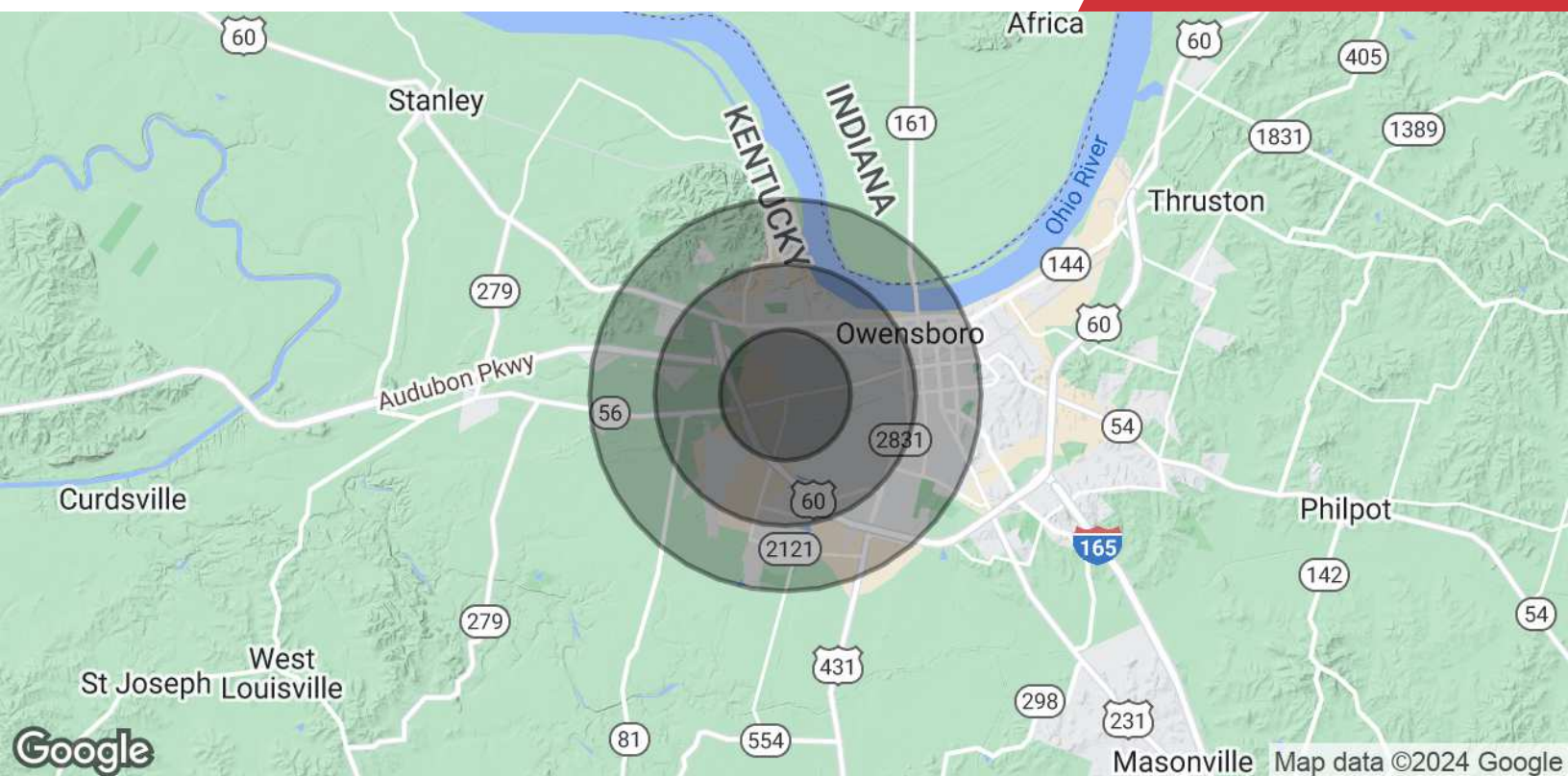
jimkemper@naiisaac.com | KY #189559











	1 Mile	2 Miles	3 Miles
Population			
Total Population	10,571	31,797	51,769
Average Age	40.0	38.4	38.1
Average Age (Male)	39.7	35.4	35.8
Average Age (Female)	43.7	42.1	40.4
Households & Income			
Total Households	4,312	13,357	21,550
# of Persons per HH	2.0	2.1	2.2
Average HH Income	\$65,067	\$66,578	\$64,937
Average House Value	\$191,259	\$166,785	\$138,107

* Demographic data derived from 2022 STDB