



1st Floor Office Condo

1655 Burlington Pike, Suites 50 & 75
Florence, Kentucky 41042

Property Highlights

-

Property Overview

Offering Summary

Condo Size:	3,085 SF
-------------	----------

For More Information

Bruce R. Isaac, SIOR, CCIM

Senior Vice President

O: 859 422 4403

bruceisaac@naiisaac.com | KY #182312

Jim Kemper

Vice President

O: 859 422 4407

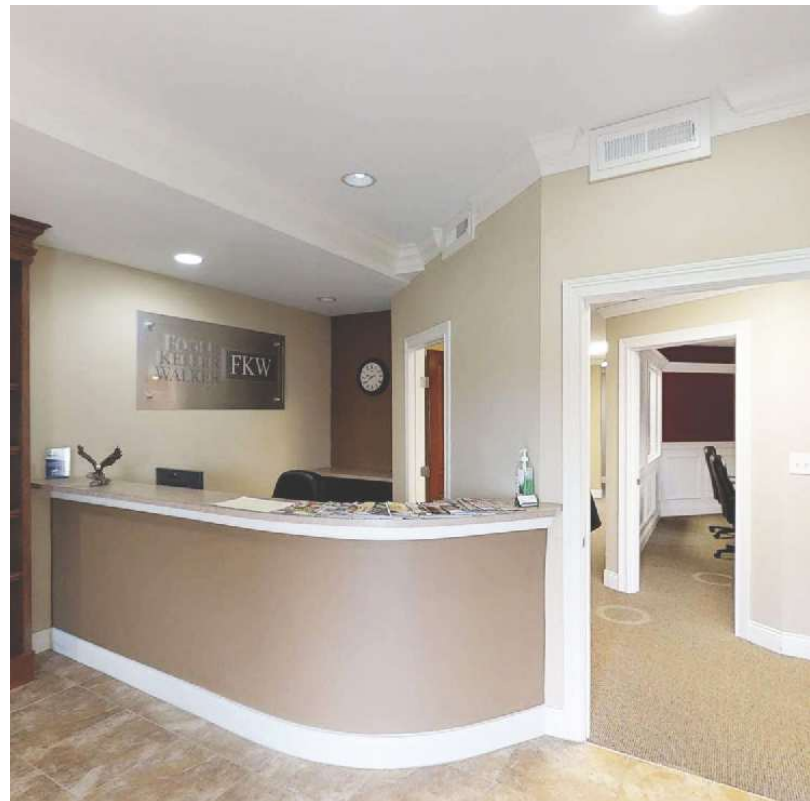
jimkemper@naiisaac.com | KY #189559



Commercial Real Estate Services, Worldwide.

For Sale

3,085 SF | Negotiable
Office Space



NO WARRANTY OR REPRESENTATION, EXPRESS OR IMPLIED, IS MADE AS TO THE ACCURACY OF THE INFORMATION CONTAINED HEREIN, AND THE SAME IS SUBMITTED SUBJECT TO ERRORS, OMISSIONS, CHANGE OF PRICE, RENTAL OR OTHER CONDITIONS, PRIOR SALE, LEASE OR FINANCING, OR WITHDRAWAL WITHOUT NOTICE, AND OF ANY SPECIAL LISTING CONDITIONS IMPOSED BY OUR PRINCIPALS NO WARRANTIES OR REPRESENTATIONS ARE MADE AS TO THE CONDITION OF THE PROPERTY OR ANY HAZARDS CONTAINED THEREIN ARE ANY TO BE IMPLIED.

771 Corporate Drive, Suite 500
Lexington, KY 40503
859 224 2000 tel
naiisaac.com



Commercial Real Estate Services, Worldwide.

For Sale

3,085 SF | Negotiable
Office Condo

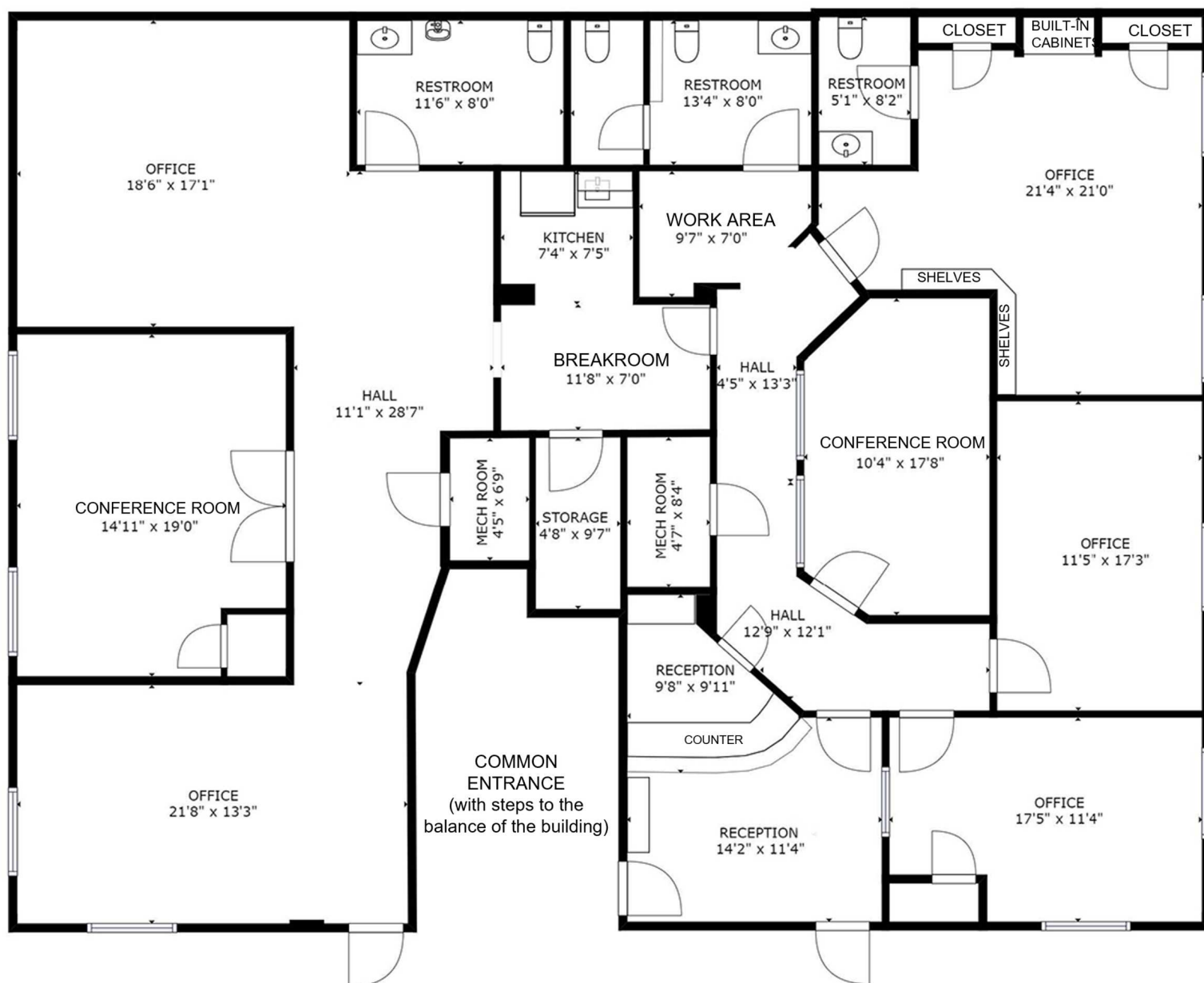


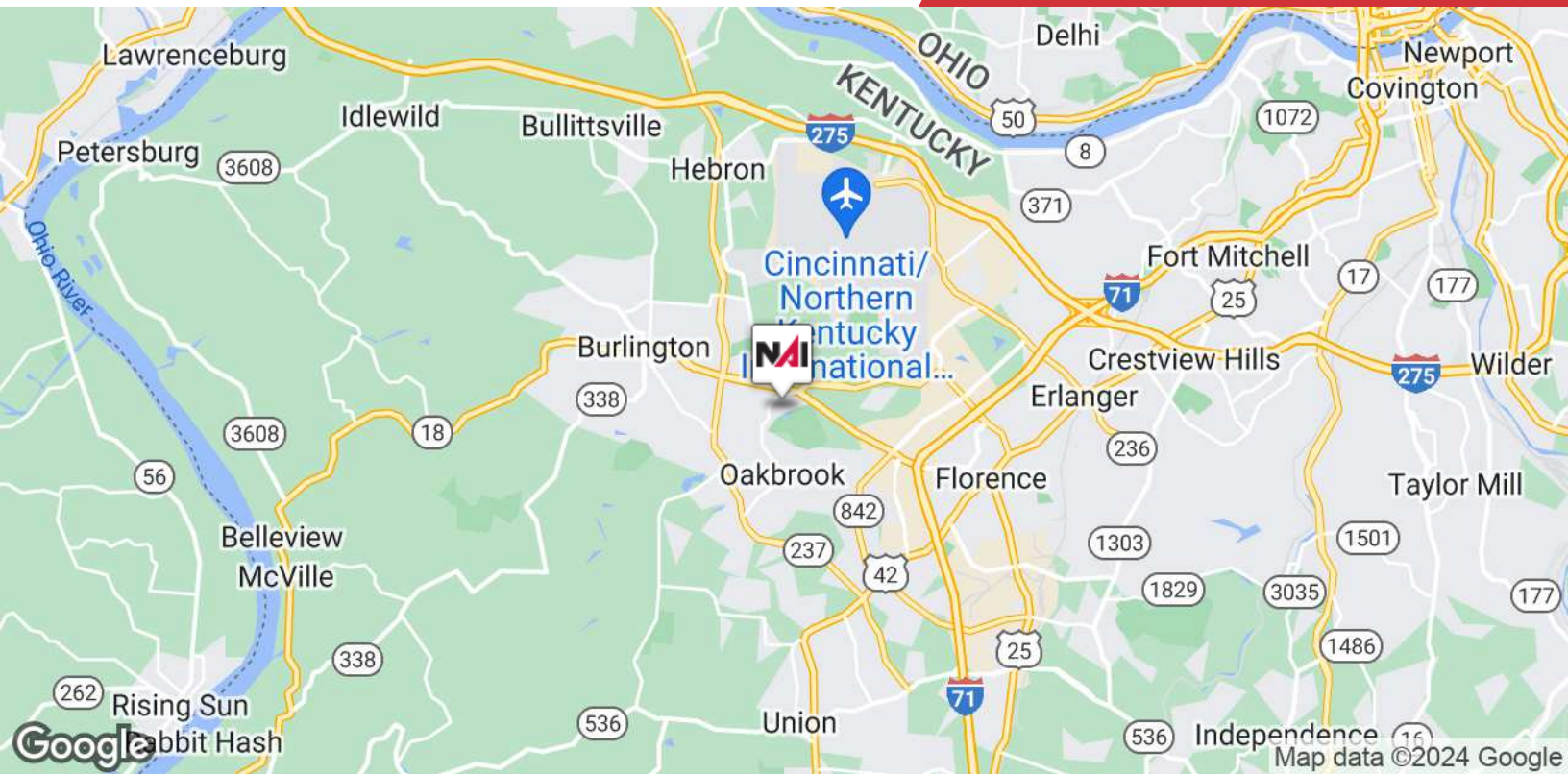
NO WARRANTY OR REPRESENTATION, EXPRESS OR IMPLIED, IS MADE AS TO THE ACCURACY OF THE INFORMATION CONTAINED HEREIN, AND THE SAME IS SUBMITTED SUBJECT TO ERRORS, OMISSIONS, CHANGE OF PRICE, RENTAL OR OTHER CONDITIONS, PRIOR SALE, LEASE OR FINANCING, OR WITHDRAWAL WITHOUT NOTICE, AND OF ANY SPECIAL LISTING CONDITIONS IMPOSED BY OUR PRINCIPALS NO WARRANTIES OR REPRESENTATIONS ARE MADE AS TO THE CONDITION OF THE PROPERTY OR ANY HAZARDS CONTAINED THEREIN ARE ANY TO BE IMPLIED.

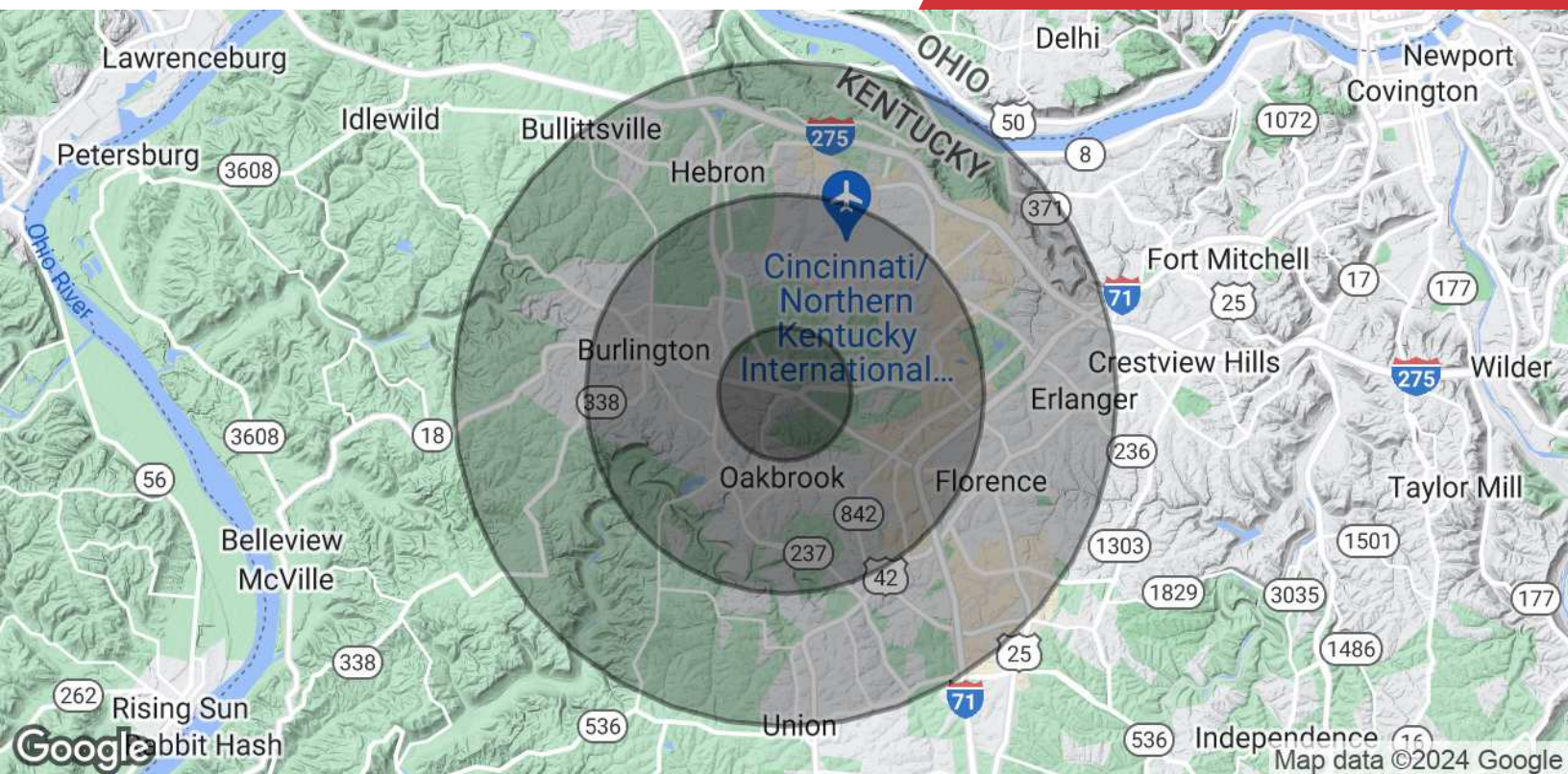
771 Corporate Drive, Suite 500
Lexington, KY 40503
859 224 2000 tel
naiisaac.com

For Sale

3,085 SF | Negotiable
Office Space







Population

	1 Mile	3 Miles	5 Miles
Total Population	6,875	43,167	104,849
Average Age	47.1	41.0	38.5
Average Age (Male)	43.6	39.4	36.5
Average Age (Female)	47.9	41.3	39.7

Households & Income

	1 Mile	3 Miles	5 Miles
Total Households	3,246	16,176	40,225
# of Persons per HH	1.9	2.5	2.5
Average HH Income	\$90,420	\$96,328	\$91,242
Average House Value	\$175,320	\$185,039	\$172,429

* Demographic data derived from 2022 STDB