

For Lease

Small Office Space

| Negotiable

Office Building

33 W 2nd Street
Maysville, Kentucky 41056

Property Highlights

- +/-28,055 SF office building in downtown Maysville
- Located just two blocks from the Ohio River
- +/-200 - 2,321 SF for lease
- Several suites offer great scenic views of the Ohio River
- Rental Rate: \$15.00 PSF Modified Gross

Demographics

	1 Mile	5 Miles	10 Miles
Total Households	345	4,931	9,850
Total Population	933	12,645	25,423
Average HH Income	\$55,676	\$51,459	\$50,276

Available Spaces

Spaces	Lease Rate	Size (SF)
Suite 400	\$15.00 SF/yr	200
Suite 501	\$15.00 SF/yr	457
Suite 502	\$15.00 SF/yr	272
Suite 503	\$15.00 SF/yr	272
Suite 504	\$15.00 SF/yr	560
Suite 505	\$15.00 SF/yr	695
Mezzanine	\$15.00 SF/yr	2,321



For more information

Chad Voelkert, Vice President

O: 859 422 4408 | C:
cvoelkert@naiisaac.com

Jim Holbrook, Assistant Vice President

O: 859 422 4415 | C: 859 351 8509
jholbrook@naiisaac.com

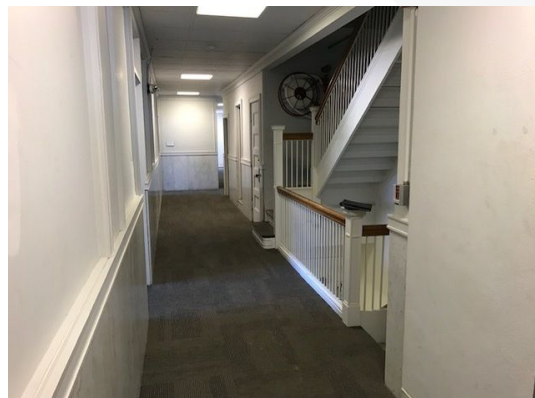
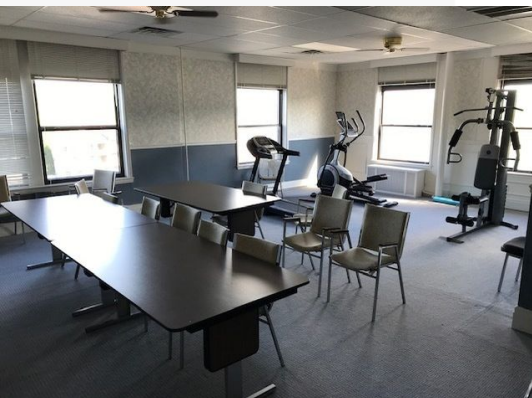


Commercial Real Estate Services, Worldwide.

771 Corporate Drive, Suite 500
Lexington, KY 40503
859 224 2000 tel
naiisaac.com



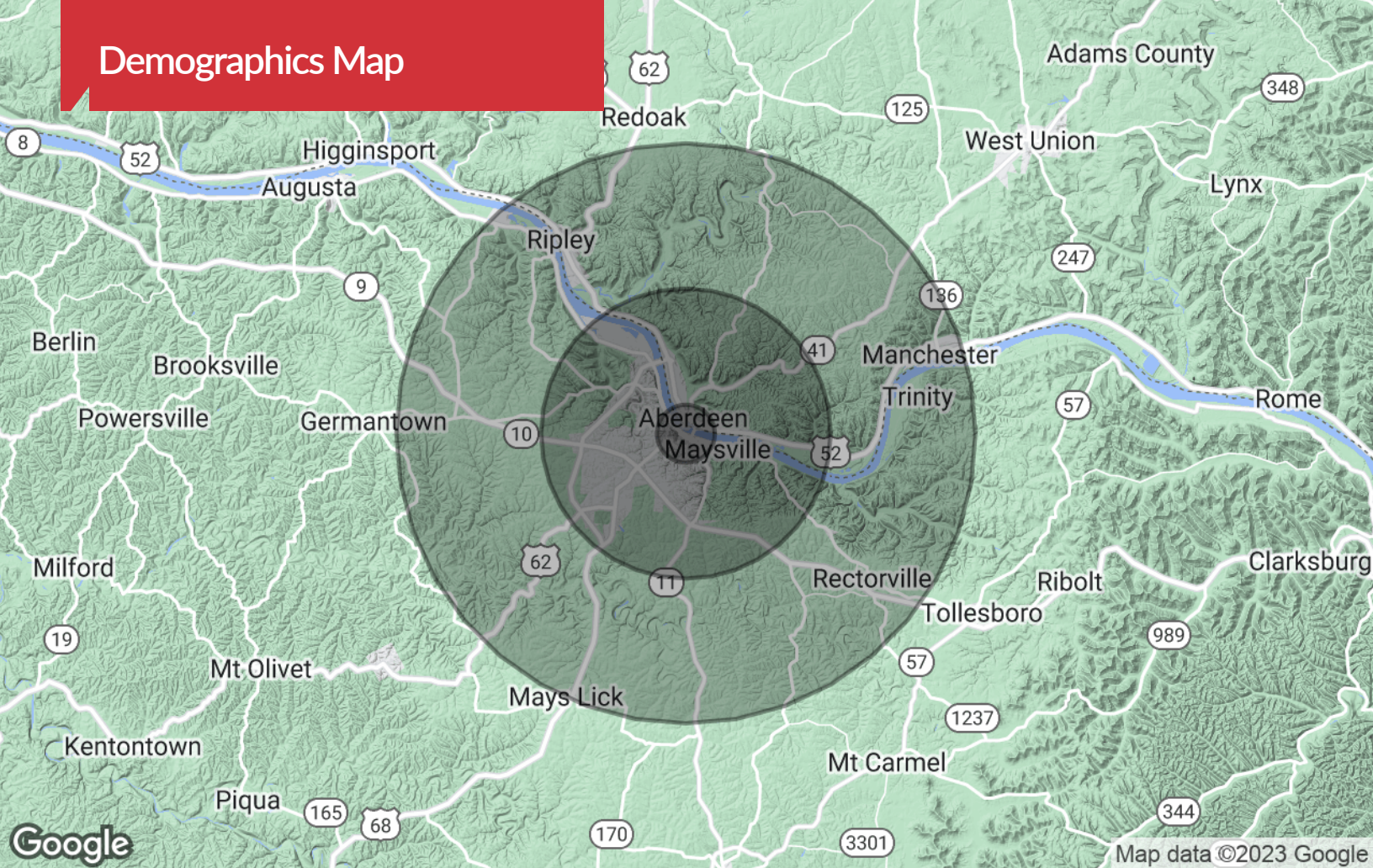
Additional Photos



Location Maps



Demographics Map



Population

	1 Mile	5 Miles	10 Miles
TOTAL POPULATION	933	12,645	25,423
MEDIAN AGE	42.2	41.0	40.5
MEDIAN AGE (MALE)	37.8	37.4	38.9
MEDIAN AGE (FEMALE)	48.8	45.8	42.8

Households & Income

	1 Mile	5 Miles	10 Miles
TOTAL HOUSEHOLDS	345	4,931	9,850
# OF PERSONS PER HH	2.7	2.6	2.6
AVERAGE HH INCOME	\$55,676	\$51,459	\$50,276
AVERAGE HOUSE VALUE	\$91,034	\$94,212	\$107,621

Race

	1 Mile	5 Miles	10 Miles
% WHITE	86.3%	88.4%	92.9%
% BLACK	13.7%	11.4%	6.5%
% ASIAN	0.0%	0.0%	0.0%
% HAWAIIAN	0.0%	0.0%	0.0%
% INDIAN	0.0%	0.0%	0.1%
% OTHER	0.0%	0.2%	0.5%

Ethnicity

	1 Mile	5 Miles	10 Miles
% HISPANIC	1.3%	1.1%	1.1%

* Demographic data derived from 2020 ACS - US Census